

SOKOYO[®]

LUMO SERIES
Split Style Street Light

SOLAR/LED STREET LIGHT



Appearance Patent Number: 201730356707.0



China free hot line: 0086-514-8216-6606

Tel: 0086 514 87914128

Web: www.sokoyosolar.com

Factory address: #3 district, Guoji Industrial park, North suburb, Yangzhou, Jiangsu Province, China

Sales Headquarter: Floor 4, Building 2, Guotai Building, No. 440, West Wenchang Road, Hanjiang District, Yangzhou city



INTELLIGENT AND EFFICIENT ENERGY SAVING AND ENVIRONMENTAL PROTECTION SIMPLE WITH FASHION

LUMO series LED street light combines green lighting, energy saving and environmental protection, as well as the decoration of the city landscape and is designed as a simple and smooth shape, compact LED street lamp, which is suitable for the road lighting in cities, villages, industrial parks and other places.



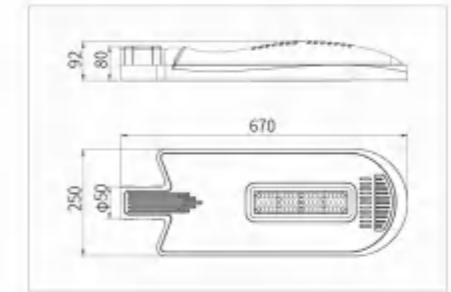
FRONT



RIGHT



TOP



KY-F-XC ^{DC} LUMO Solar Split Type Street Light



Patented design, available in a variety of colors;
Modular integration design, easy installation and maintenance;
Effective energy saving, extend the whole lamp service life;
Patented lens, bat-wing light distribution, more uniform light distribution.



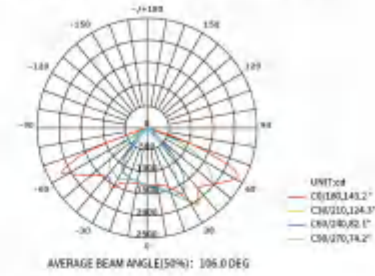
Product Model	KY-F-XC-001	KY-F-XC-002
Rated Power	20W/30W/40W	50W/60W
System Voltage	DC12V/24V	
Lithium Battery	12.8V/42AH 537.6WH	12.8V/66AH 844.8WH
Suggested Solar Panel	90W/18V	120W/18V
Light Source	LUMILEDS 3030/5050	
Light Distribution	Bat-Wing light distribution (150°x75°)	
Light Efficiency	≥130LM/W	≥130LM/W
Color Temperature	3000K/4000K/5700K/6500K	
CRI	≥Ra70	
IP Rate	IP66	
IK Rate	IK08	
Working Temperature	-10°C~+60°C	
Product Weight	3.4kg	
LED Lifespan	>50000H	
Controller	10A	20A
Mount Diameter	φ50mm	
Lamp Dimension	670×250×92mm	
Package Dimension	685×400×270mm(4pcs/CTN)	
Suggested Mount Height	6m~7m	7m~8m

LIGHT DISTRIBUTION CURVE

Street Light Intensity Test Report(30W Parameter)

DATA OF LAMP		PHOTOMETRIC DATA		Eff:148.03lm/W	
MODEL	KY-F-XC-001	Imax (cd)	2380	η street up (%)	0.4
NOMINAL POWER (W)	30	LOR (%)	100.0	η street down (%)	56.0
RATED VOLTAGE (V)	36	TOTAL FLUX (lm)	4381	η house up (%)	0.4
NOMINAL FLUX (lm)	4380.79	MAXIMUM θ (C, Y)	15°, 58.0°	η house down (%)	43.2
LAMPS INSIDE	1	η up (%)	0.8	76 FLASHAREA (mf)	
TSET VOLTAGE (V)	35.69	η down (%)	99.2	STL	

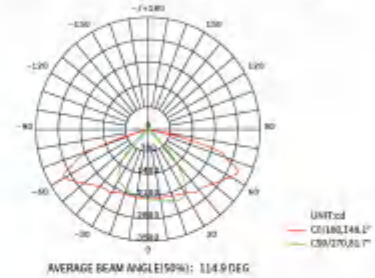
Meridian Light Distribution Curve(30W Parameter)



Street Light Intensity Test Report(50W Parameter)

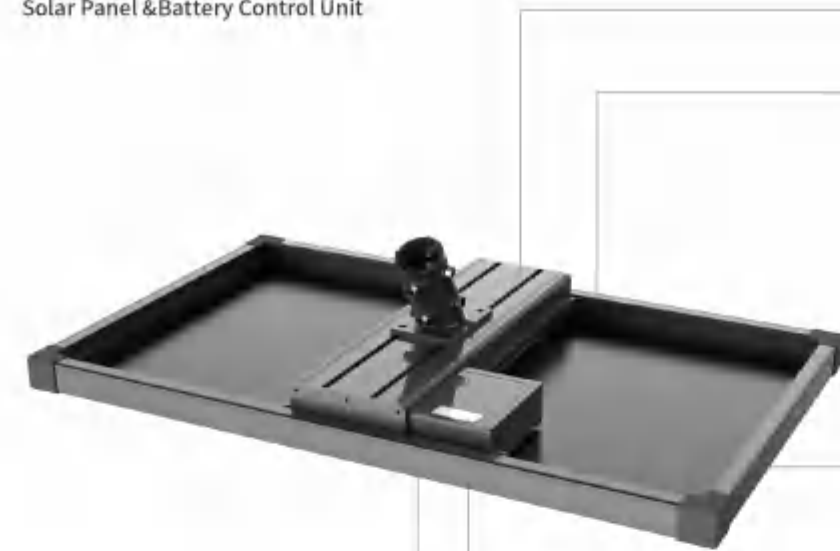
DATA OF LAMP		PHOTOMETRIC DATA		Eff:140.76lm/W	
MODEL	KY-F-XC-002	Imax (cd)	3112	η street up (%)	0.4
NOMINAL POWER (W)	50	LOR (%)	100.0	η street down (%)	59.2
RATED VOLTAGE (V)	36	TOTAL FLUX (lm)	7038	η house up (%)	0.3
NOMINAL FLUX (lm)	7037.98	MAXIMUM θ (C, Y)	0°, 64.0°	η house down (%)	40.0
LAMPS INSIDE	1	η up (%)	0.8	76 FLASHAREA (mf)	
TSET VOLTAGE (V)	38	η down (%)	99.2	STL	

Meridian Light Distribution Curve(50W Parameter)



COMPONENT SELECTION TABLE

Solar Panel & Battery Control Unit



Battery pack fixing bracket

Tighten the battery pack to prevent shaking.

Battery Pack

Excellent thermal conductivity, large heat exchange area. Helps speed up heat exchange and take away more heat. To achieve the ideal heat dissipation effect.

Built-in lithium iron phosphate battery, high efficiency, light and convenient, long life span; inhibit the polarization of the battery, reduce the thermal effect and improve magnification performance.

Battery panel corner guard

Prevent accidental injury from sharp corners of the battery board during installation.

Solar panel

High efficiency monocrystalline silicon

visual control system

It has functions of intelligent control of lighting time, overcharge, over discharge, electronic short circuit, overload protection, anti-reverse connection protection, etc. Can adapt to cold, high temperature, humidity and other environments.

Mounting Holder

Accessory connecting to light pole

COMPONENT SELECTION TABLE



Monocrystal solar panels

The photoelectric conversion efficiency of monocrystalline silicon solar cells is 15-24%, which is the highest in all kinds of solar cells at present. Because monocrystalline silicon is usually sealed with toughened glass and waterproof resin, it is strong and durable, with a service life of 15 to 25 years.

Product Model	Rated Power	Working voltage	Working current	Open Circuit Voltage	Short Circuit Current	L(mm)	W(mm)	H(mm)	Weight(kg)
S-090.18-A770	90	18	5	21.6	5.5	680	770	30	5.9
S-120.18-A1030	120	18	6.67	21.6	7.34	680	1030	35	8.2

Built-in lithium iron phosphate flat head battery

Mature automatic production technology, high yield of products, and more deep cycles of the cell.

Product Model	Specification	Voltage	L(mm)	W(mm)	H(mm)	Weight(kg)
C2-30.12	30AH	12.8V	286	184	130	5.59
C2-36.12	36AH	12.8V	319	184	130	6.33
C2-42.12	42AH	12.8V	352	184	130	7.06
C2-48.12	48AH	12.8V	385	184	130	7.80
C2-54.12	54AH	12.8V	418	184	130	8.54
C2-60.12	60AH	12.8V	451	184	130	9.28
C2-66.12	66AH	12.8V	484	184	130	10.02





KY-D-XC AC
LUMO LED Street Light



Simple and smooth appearance, compact structure;
Adopting geothermal resistance structure technology
and professional non-imaging optical technology;
Realize the advantages of high luminous efficiency, long
life and high CRI.



WELL-RIGOROUS DETAILS STRUCTURE RELIABLE WEATHERPROOF

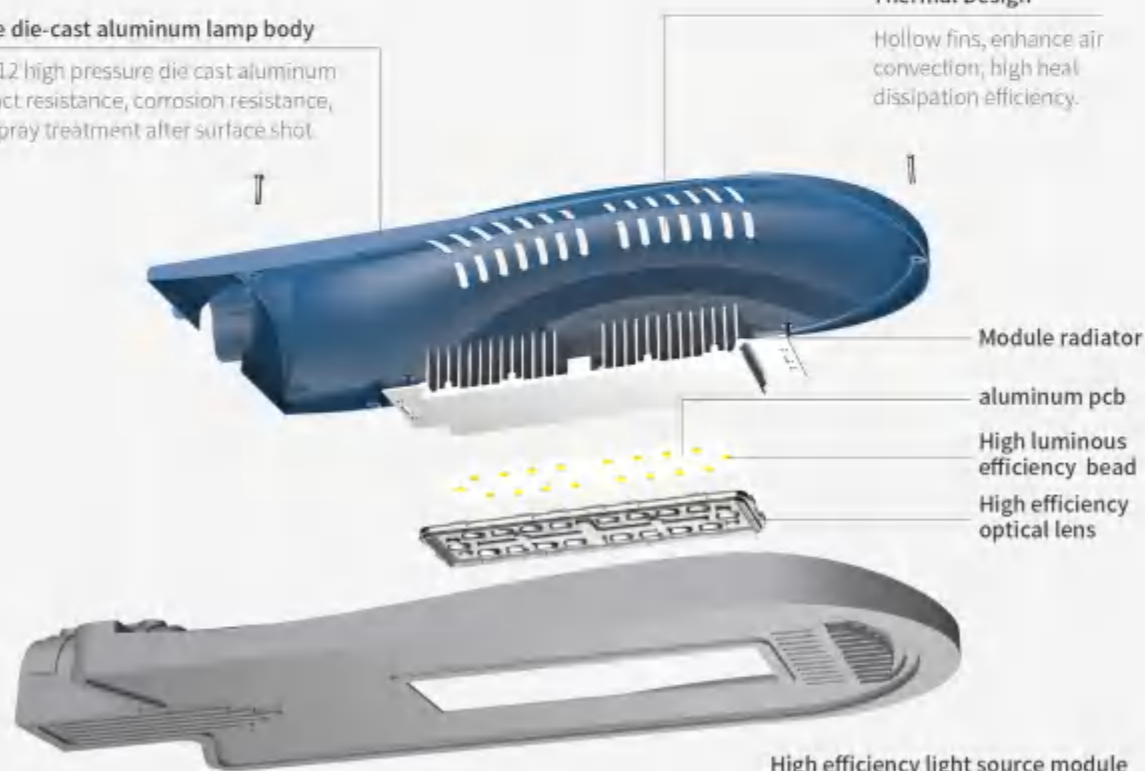
Outdoor LED street lamps not only need go through wind and frost, but also to experience hot summer. The modular design achieves IP65 protection rating, effectively isolating salt tide, dust and heat, enabling it to cope with the harsh outdoor environment.

High-pressure die-cast aluminum lamp body

Adopting ADC12 high pressure die cast aluminum molding, impact resistance, corrosion resistance, electrostatic spray treatment after surface shot blast.

Thermal Design

Hollow fins, enhance air convection, high heat dissipation efficiency.



Module radiator

aluminum pcb

High luminous efficiency bead

High efficiency optical lens

High efficiency light source module

Specially tailored patent lens for largescale Improve the lighting effect, so thatthe uniformity ofillumination Betterand better improve the road lightingeffect.

TECHNICAL PARAMETER

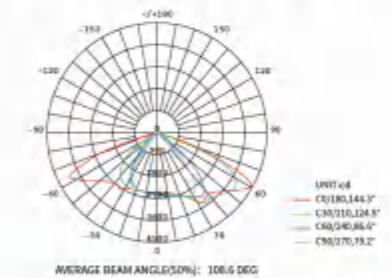
Product Model	KY-D-XC-001
Rated Power	60W
System Voltage	AC100V-305V
Frequency range	50-60Hz
Rated Current	1.5A
Light Source	LUMILEDS 3030/5050
Light Distribution	Bat-Wing light distribution (150°x75°)
Light Efficiency	≥130LM/W
Color Temperature	3000K/4000K/5700K/6500K
CRI	≥Ra70
IP Rate	IP66
IK Rate	IK08
Working Temperature	-10°C~+60°C
Product Weight	4.0kg
LED Lifespan	>50000H
Controller	Meanwell
Mount Diameter	φ50mm
Lamp Dimension	670x250x92mm
Package Dimension	685x400x270mm (4pcs/CTN)
Suggested Mount Height	6m-7m

LIGHT DISTRIBUTION CURVE

Street Light Intensity Test Report(60W Parameter)

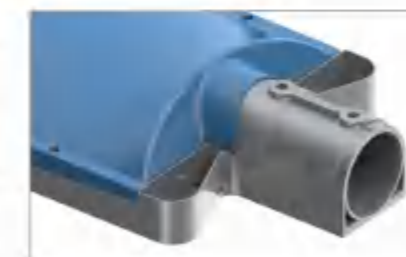
DATA OF LAMP		PHOTOMETRIC DATA		E#:143.46lm/W	
MODEL	KY-D-XC-001	I _{max} (cd)	4422	η _{street up} (%)	0.4
NOMINAL POWER (W)	60	LOR (%)	100.0	η _{street down} (%)	56.7
RATED VOLTAGE (V)	36	TOTAL FLUX (lm)	8608	η _{house up} (%)	0.4
NOMINAL FLUX (lm)	8607.62	MAXIMUM θ (C,γ)	0°, 60.0°	η _{house down} (%)	42.5
LAMPS INSIDE	1	η _{up} (%)	0.8	7θ FLASHAREA (m²)	
TSET VOLTAGE (V)	40	η _{down} (%)	99.2	STL	

Meridian Light Distribution Curve(60W Parameter)



Bat-Wing Type Light source

The lens is Teijin brand.1225Z is of high strength and high adaptability.



Mounting Sleeve

φ50mm sleeve.



Radiator hole

Good heat dissipation, Adopting ADC12 high pressure die-cast aluminum molding, impact resistance, corrosion resistance, electrostatic spray treatment after surface shot blast.

